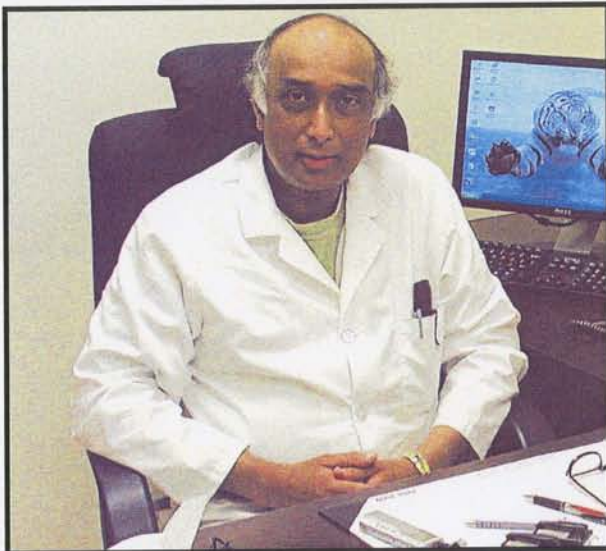


EAST TENNESSEE CANCER, BLOOD & INFUSION CENTER



The office of
A.K. Sen MD, FACP, MRCP(UK)
Diplomate American Board of Medical
Oncology & Hematology



Located at the
ATRIUM in the Med Tech Regional Park

110 Corporate Drive, Suite 120
Johnson City, TN 37604
Telephone (423)282-0534
Fax (423) 282-2064



And
**Professional Building at
Laughlin Memorial Hospital MOB 2**

1406 Tusculum Blvd
Suite 2000
Greeneville, TN 37745
Telephone (423) 787-7080
Fax (423) 787-7087



Patients are receiving treatment for all
CANCER AND BLOOD
problems including chemotherapy and
biologic therapy. In addition we are a
certified infusion center for the administra-
tion of Remicade, Reclast, Boniva,
Tysabri, and Orenicia in the treatment of:

**RHEUMATOID ARTHRITIS
CROHN'S DISEASE
PSORIAS
PSOARIATIC ARTHROPATHY
ANKYLOSING SPONDYLITIS
PAGET'S DISEASE OF THE
BONE
OSTEOPOROSIS
MULTIPLE SCLEROSIS**

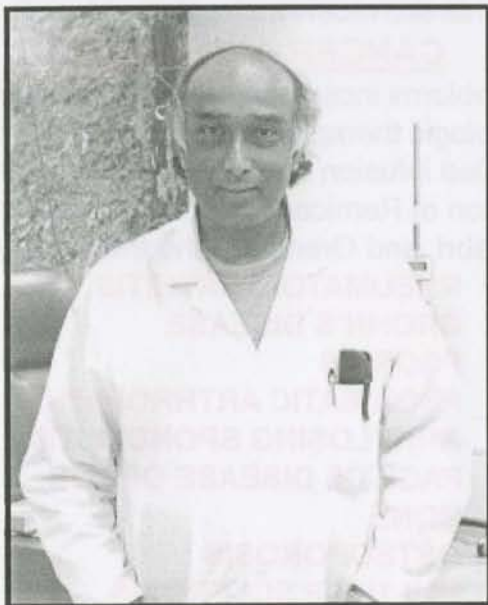


Dr. Sen is credentialed at Johnson City
Medical Center, Indian Path Medical
Center, Holston Valley Medical Center,
Laughlin Memorial Hospital, Takoma
Hospital, Sycamore Shoals Hospital,
Northside Hospital and Specialty Hospital.

He is available for inpatient and outpa-
tient consults.

For appointments at either location
please call: 423-787-7080 or 423-787-
7088

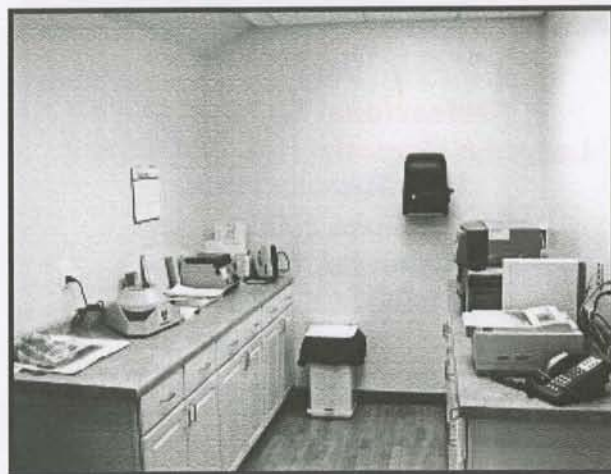
We accept most insurances including
Medicare/Medicaid.



Dr. Sen is Board Certified by the American Board of Medical Oncology and Hematology. He is also certified by Three Royal Colleges of Physicians in the United Kingdom, and is a member of the following professional associations:

- Fellow of the American College of Physicians
- American Society of Clinical Oncology
- American Medical Association
- Tennessee Medical Association
- Diplomate American Board of Medical Oncology & Hematology
- European Society of Medical Oncology
- Member of Royal Colleges of Physicians (UK)

Dr. Sen has been in Private Practice in Greeneville since 1994. He opened a second office in Johnson City in 2007.



Directions to Greeneville Office

From 11E turn onto Tusculum Blvd. You will see Laughlin Memorial Hospital on the left side.

Turn into the 2nd entrance for the medical buildings.

Go into MOB #2

We are in Suite 2000 on the upper level of the building.

Directions to Johnson City Office

From State of Franklin Road, turn onto Knob Creek Road. Go up over the hill and back down. You will see Corporate Drive on the right side.

Turn onto Corporate Drive, go about 100 yards and you will see our office located in the Atrium. 110 Corporate Drive, Suite 120.

